

WindowHelper 1.5

About WindowHelper

WindowHelper is a tool that can help you manager the windows within MapInfo Professional.

It has a number of features that will be described in this document. Among the features you'll find cloning any windows, storing the size and position of certain window types and the ability to restore a closed window.

With this new release of WindowHelper the tool has been made into a floating dockable window that also shows a list of currently open windows. You can thru this floating window work with and manage your windows.

To get the most out of this tool it's recommended that you add this tool to the Tool Manager and sets it to Autoload.

The features of this tool have all been made in response to requests from customers.

As this tool takes advantage of docking capability added in MapInfo Professional 10.5 you need to be running MapInfo Professional 10.5.2 or later to be able to use WindowHelper.

If you have any requests or feedback on the Window Helper, please send your feedback thru the Ideas Community: <http://www.pbinsight.com/communities/pbbi-ideas-community/>

Add your feedback to the MapInfo Professional product and mark the subject with "WindowHelper tool".

Install WindowHelper

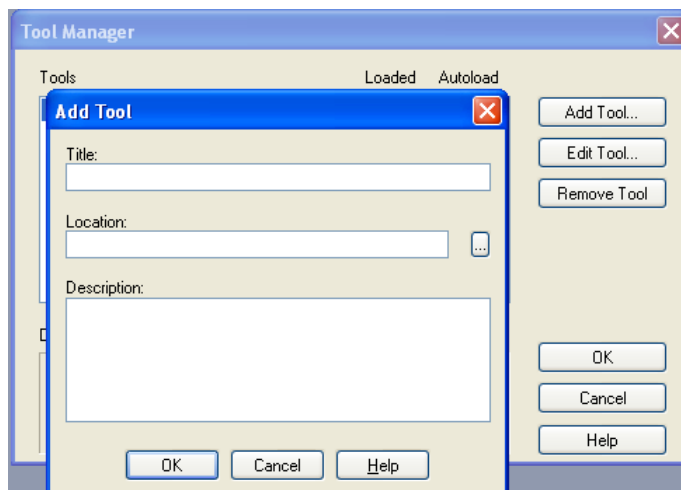
You install WindowHelper by downloading the WindowHelper.zip file. Extract the files into a new folder or into the folder with your other MapInfo tools.

It's not recommended to put this tool on a network drive as it is using a number of .NET resources that not easily can be run from a network drive.

So make sure you put the tool on your local hard drive.

Add tool to Tool Manager

Go to *Tools > Tool Manager* and click on the *Add tool...* button.



Enter a title for the tool (for instance: WindowHelper).

Use the small button to pick the WindowHelper.mbx from the folder where you installed it.

You can also add a description (for instance: This tool helps you manage Windows)

Click *OK* and make sure you also check the *Autoload* checkbox for this tool to load it when ever MapInfo Professional starts up.

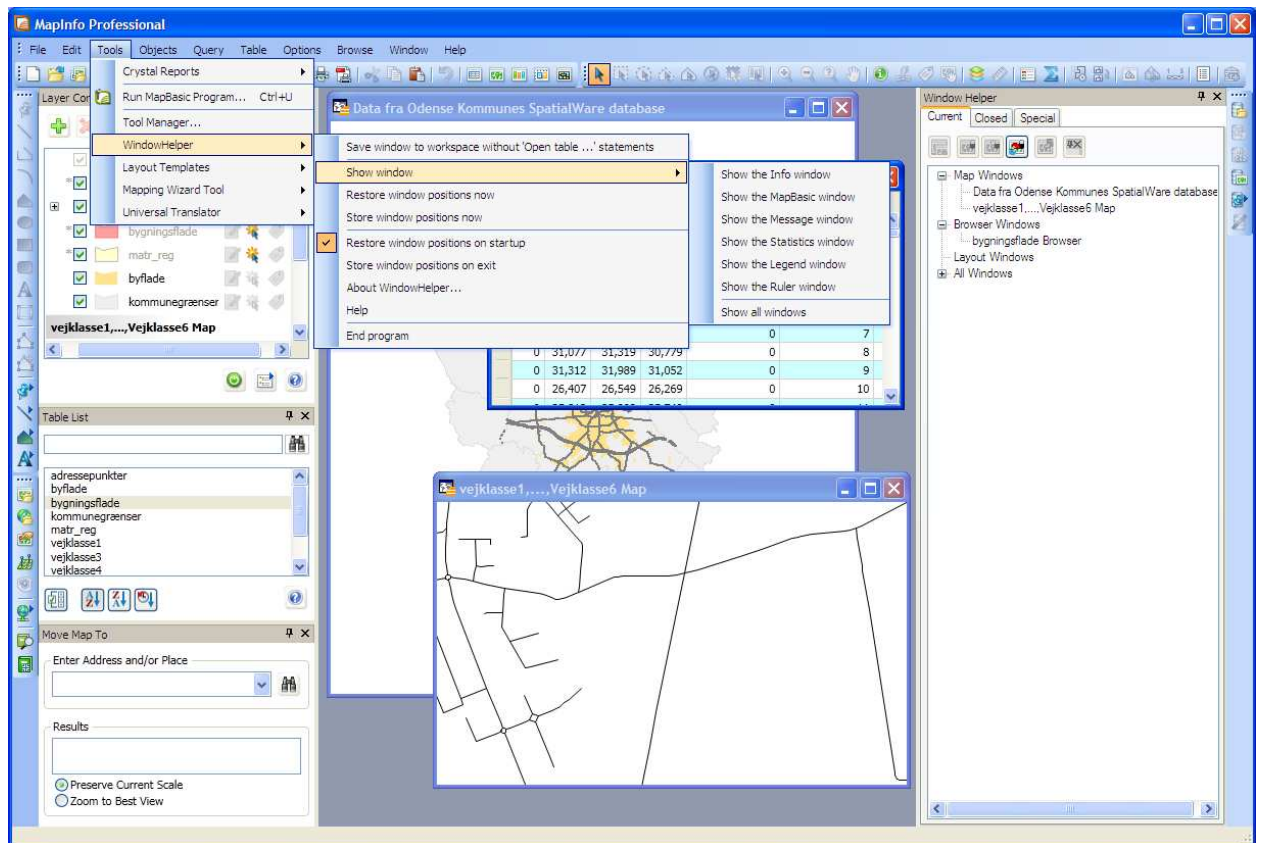
Click *OK* to add the WindowHelper tool to the Tool Manager.

Features of WindowHelper

When you run the WindowHelper tool you will get a new floating window within MapInfo Professional called Window Helper.

And you will get a menu called WindowHelper in the Tools menu.

In the picture below you can see the WindowHelper window in the right side of the MapInfo Professional program window and the menu unfolded from the Tools menu.



The Window Helper window

The Window Helper window can be floating on top of the normal map and browser windows or you can dock it to one of the four sides of MapInfo Professional. Simply drag the window using the title bar to the location you want it, and you will see some "helper icons" that will help you position the window as you like.

As you can see the Window Helper window has three tabs at the top:

- Current will give you a list of the currently open windows within MapInfo Professional. You can select any of these windows and for instance clone them.
- Closed will give you a list of windows that have been closed in the current session. You can easily reopen one of the closed windows

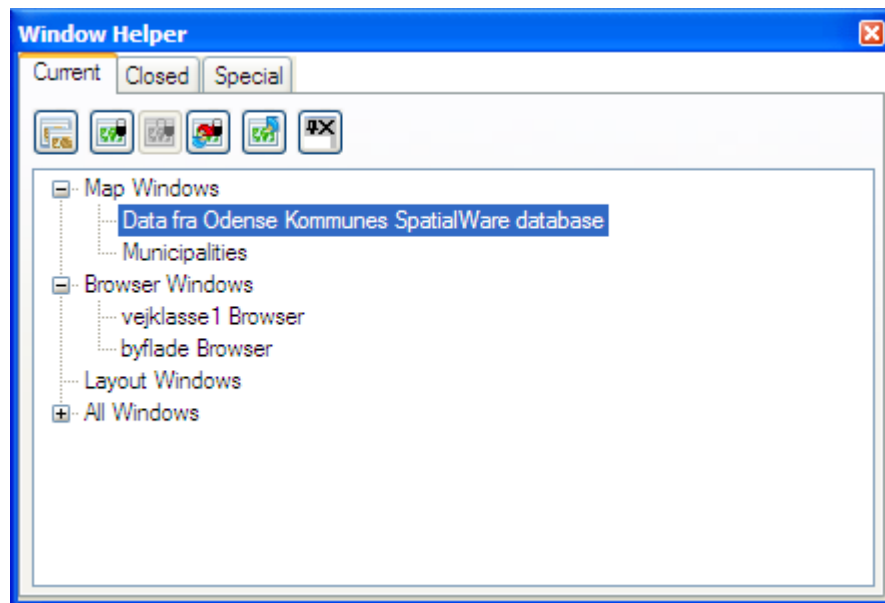
- Special contains a list of special windows. A special window is for instance the MapBasic window, the Info window and the Statistics window. Thru the WindowHelper you are able to make these windows dockable.

Let's look a bit more at the features of each of these three tabs.

Current windows

As mentioned earlier this is a list of currently open windows in MapInfo Professional. There is a number of way to interact and manage these windows.

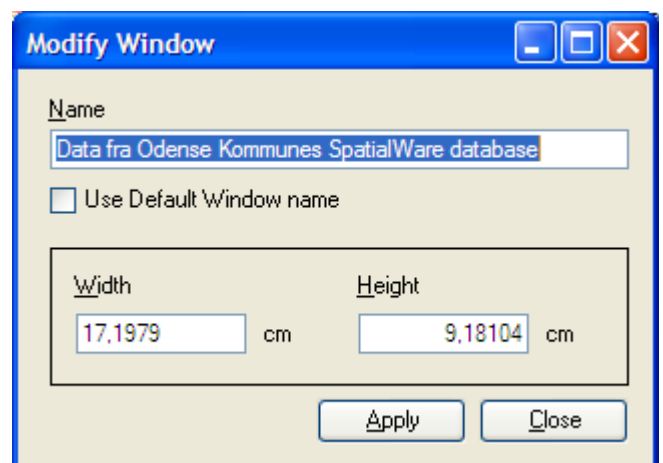
Notice that the list is grouped into a number of window types such as Map Windows, Browser Windows, Layout Windows and All Windows. This is do make it easier to locate the window you need.



1. If you select one these windows, it will be made the active window appear on top of the other windows.
2. If you double click on one of the windows you will be able to set the window title and the size (height and width) of the window thru the Modify Window dialog.

Enter the new name for the window and hit the Apply button. The name of the window has now changed.

If you check the Use Default Window name MapInfo Professional will use the default and dynamical name for the window.



You can also specify the width and size of the window. Note that the unit here is the paper unit of the current MapInfo Professional session. If you want to change this, you can do so thru Options > Preferences > System.

You also have a number of buttons at the top of the Current tab.

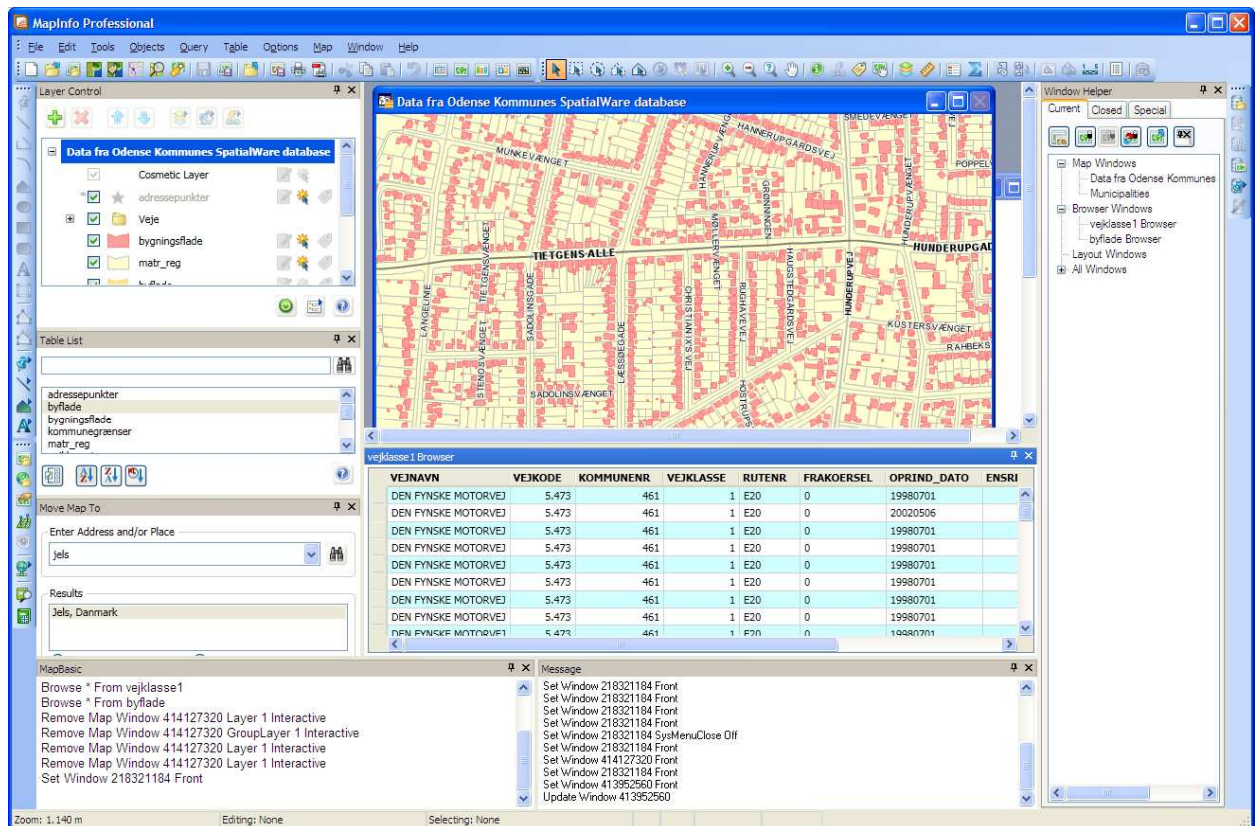
The first, *Clone Selected Window*, will let you clone or make a copy of the currently selected window. Normally you can only clone a map window in MapInfo Professional.

Lock and Unlock Selected Window will let you lock the close button of the window. This will prevent that you by mistake close a window instead of minimizing it.

Autolock All Windows will lock all current and new windows.

Close Selected window will close the currently selected window. If you have locked the window, you will be asked if you really want to close the window. You might also get the normal MapInfo warning that unsaved changes in the window will get lost.

The last button, *Make Selected Window Dockable*, lets you turn an ordinary MapInfo window into a dockable window that can stay on top of the other windows and even can be docked within the program window of MapInfo Professional, see picture below.



Notice the docked browser window and the docked MapBasic and Message window.

Please note that the dockable state of a window is stored anywhere. It's not stored in the configuration file for Window Helper nor will it be stored when you save you current session into a workspace.

Closed windows

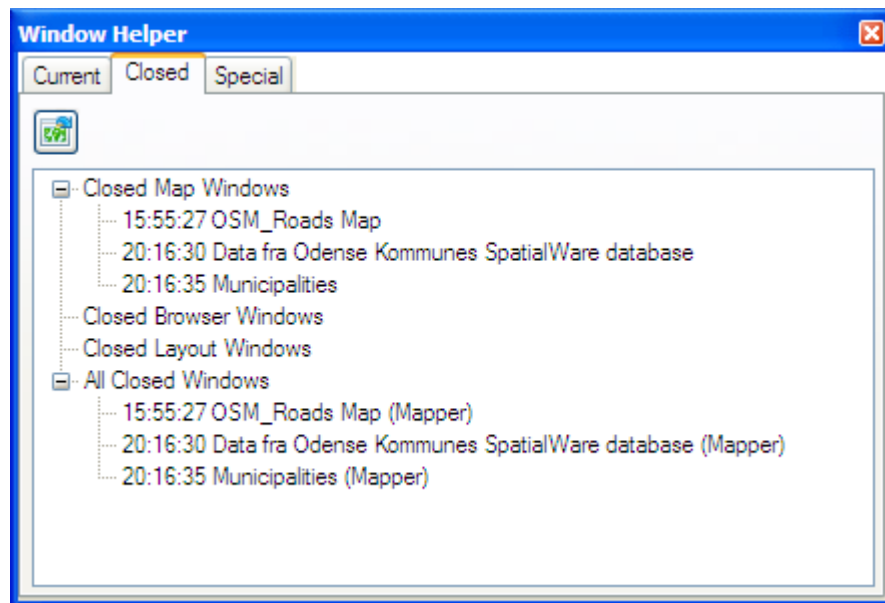
When selecting the Closed tab you will see a list of windows that have been closed during this session.

This list is just like the list of currently open windows grouped into window types, Closed Map Windows, Closed Browser Windows, Closed Layout Windows and All Closed Windows. Again this will make it easier for you to locate the window you are looking for.

Also note that there is a time stamp in front of all the closed window names – this can give you an idea of where to locate the window you need.

The Closed Windows view currently only supports one single feature, namely the Restore Selected Closed Window. This will let you restore a closed window as it looked when you closed it.

What happens is that Window Helper takes a snap shot of the window just before the window is being closed. This snap shot is similar to the statement that you will find in a workspace.

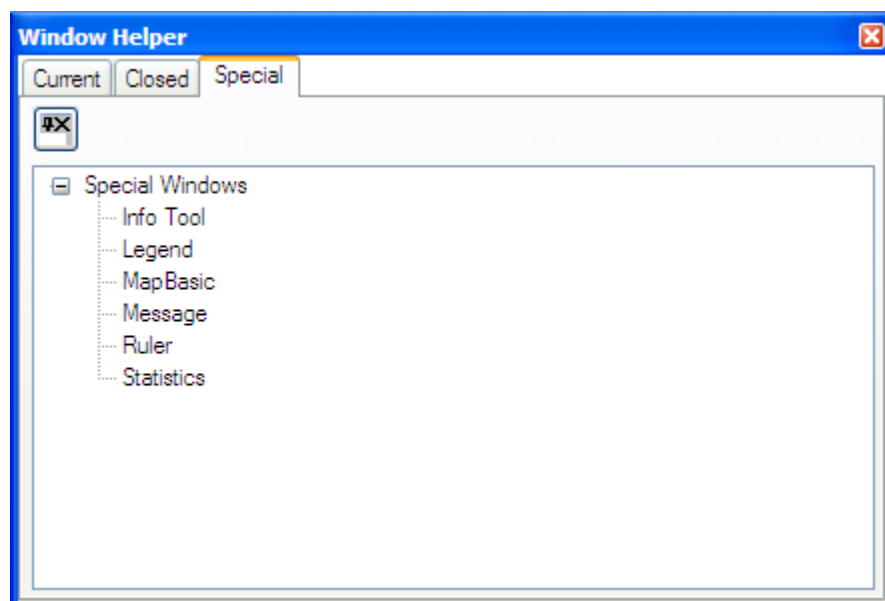


There is however one difference: Window Helper does not "capture" which tables needs to be open. All it captures is the Window statement. So if you have closed some tables since you closed the window, the restore window might not work.

Special Windows

The final tab is the Special tab – or the list of special windows. A special window is any window in MapInfo Professional that isn't a document window, such as a Map, a Browser or Redistricter, a Layout, a Graph, a Cartographic Legend or a 3D Map.

Special windows are those shown in the picture below.



Thru Window Helper you can make a special window dockable.
Select one of the special windows and click the Make Selected Window Dockable.

You can now dock this special window next to for instance the Layer Control. Have a look at the picture below to see an example of some docked special windows.

Here the MapBasic window and the Message window are docked at the bottom of the MapInfo Professional program window.

The menu options

From the menu WindowHelper in the Tools menu you find a number of extra features.

Save window to workspace without 'Open Table ...' statements

If you want to save a layout that you have setup with a number of windows as a template to be reused but without the open table and windows statements you can use the menu item Save window to workspace without 'Open Table ...' statements.

This will only store the window statement of the currently active window. It will not store information on which tables to open or which other windows to create.

The stored workspace will therefore require that the tables and/or windows using by this window are open when you reopen the workspace.

Show window

Have you ever wondered why your Info window doesn't show on the screen when you use the Info tool? I'm sure you have.

This is an often seen issue when a workspace is shared by several users who have different monitor sizes or if you are working on a laptop where you have a large monitor at work, but not at home.

The Show window menu lets you easily show a "disappeared" window inside the MapInfo Professional program window. Just choose the window you want to see and it will appear inside the current size of MapInfo Professional.

Store and restore window positions

WindowHelper can help you manage where a number of the special MapInfo windows appear.

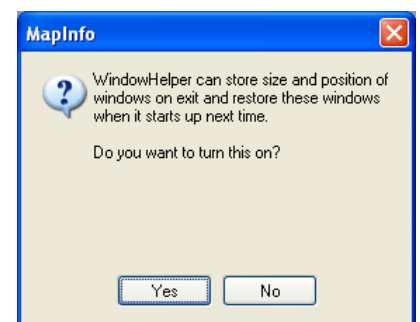
The windows that are managed are:

- The Info window
- The Message window
- The MapBasic window
- The Legend window
- The Statistics window
- The Ruler window (only position)
- The MapInfo window

You can turn on this feature thru *Tools > WindowHelper > Autostore positions of windows*. When you click on this menu item you'll see this question:

Click *Yes* to turn on this feature or click *No* to disable this feature.

The size and position of the windows are stored depending on the screen resolution. So they can have a



different size and position if your computer is connected to an external monitor with a better resolution.

Known issues

You might see some strange behavior if you have made a window dockable and then close the WindowHelper.

If you do, close MapInfo Professional and start it again.